

Finishes for Siporex

Various types of finishes used in conventional concrete construction are also applicable to Siporex system. Before applying finishes, damages should be repaired and chases or openings should be made good with Siporex glue mortar. Deep holes and chases can be dubbed with ordinary cement-sand mortar (1:6) to within 5 mm from the surface and finished with Siporex glue.



Internal Walls

Joints between wall panels should be taped with fiberglass tape. A thin wall putty to be applied in two coats gives a very smooth surface as a base for painting or wall papering. Where required, the second coat may be applied with a textured finish.

External Walls

Similarly, joints between wall panels should be taped with fiberglass tape unless if the joints are V-grooved. Where Siporex panels have V-grooved joints, two coats of textured finish are recommended. Where Siporex have plain joints, different finishing types can be applied.



Ceiling

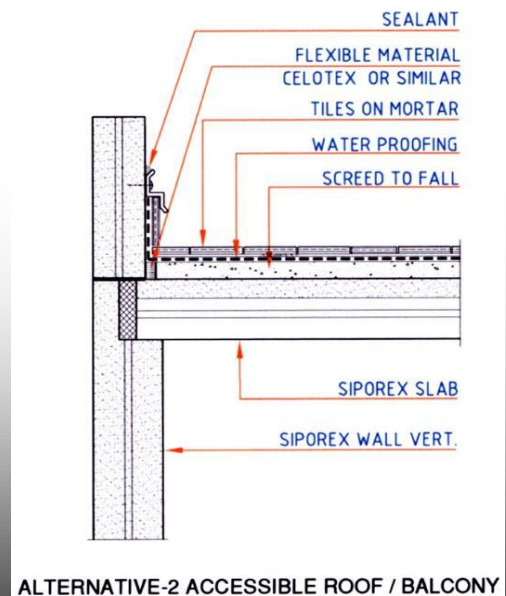
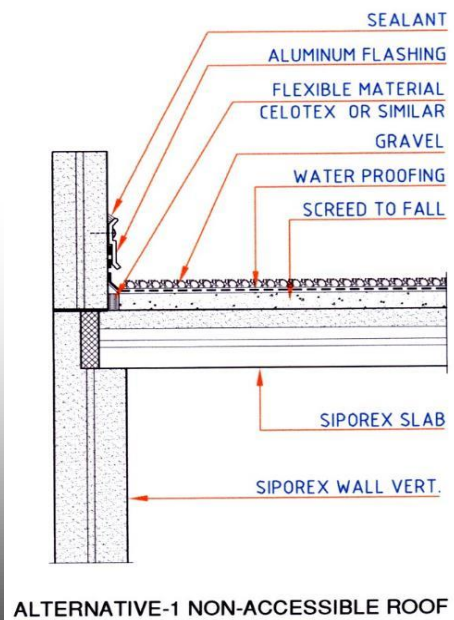
Siporex slabs make attractive ceiling with the visible V-grooved lines. A putty applied in two coats will give a very smooth base for painting. Where required, the second coat may be applied with a texture finish.

Floors

Compared to cast-in-situ concrete floors, Siporex floor slabs provide a completely dry smooth floor construction on which decorative floor finishes of tiles, parquet, linoleum and other required finishes are readily applied.



Roofs



Above sections shows the suggested arrangements of finishes on top of Siporex roof slabs (Accessible & Non-accessible roofs).



IMPRESSIVE
EXTERIORS

